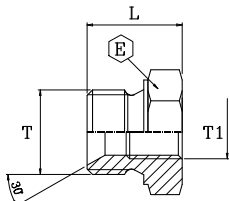


BSP M/F REDUCING PLUG

TAPPO DI RIDUZIONE M/F BSP



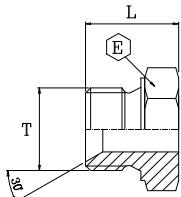
TRG

part nr. codice	thread T	thread T1	L		E		Press. Max	
			[in]	[mm]	[in]	[mm]	[psi]	[bar]
*1518013100	1/4-19	1/8-28	0,71	18,0	0,75	19	1450	100
1518017100	3/8-19	1/8-28	0,83	21,0	0,87	22	2538	175
*1518017130	3/8-19	1/4-19	0,83	21,0	0,87	22	1450	100
1518021130	1/2-14	1/4-19	0,93	23,5	1,06	27	2538	175
*1518021170	1/2-14	3/8-19	0,93	23,5	1,06	27	1450	100
1518027170	3/4-14	3/8-19	1,06	27,0	1,26	32	2538	175
*1518027210	3/4-14	1/2-14	1,06	27,0	1,26	32	1450	100
1518033170	1-11	3/8-19	1,18	30,0	1,62	41	2175	150
1518033210	1-11	1/2-14	1,18	30,0	1,62	41	2175	150
1518033270	1-11	3/4-14	1,18	30,0	1,62	41	2175	150
1518042210	1.1/4-11	1/2-14	1,32	33,5	1,97	50	1813	125
1518042270	1.1/4-11	3/4-14	1,32	33,5	1,97	50	1813	125
1518042330	1.1/4-11	1-11	1,32	33,5	1,97	50	1813	125
1518048270	1.1/2-11	3/4-14	1,40	35,5	2,17	55	1813	125
1518048330	1.1/2-11	1-11	1,40	35,5	2,17	55	1813	125
1518048420	1.1/2-11	1.1/4-11	1,40	35,5	2,17	55	1813	125
1518051420	2-11	1.1/4-11	1,67	42,5	2,76	70	1450	100
1518051480	2-11	1.1/2-11	1,67	42,5	2,76	70	1450	100

* in case of risk of broken use reducing extended / per impieghi a rischio di rottura usare colonnetta

BSP HALF NIPLES WELDABLE

MEZZO NIPLES A SALDARE BSP

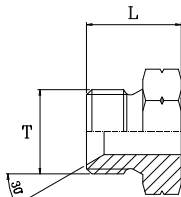


MNG

part nr. codice	thread T	L		E		Press. Max	
		[in]	[mm]	[in]	[mm]	[psi]	[bar]
1525010000	1/8-28	0,57	14,5	0,55	14	6164	425
1525013000	1/4-19	0,71	18,0	0,75	19	6164	425
1525017000	3/8-19	0,83	21,0	0,87	22	5801	400
1525021001	1/2-14	0,95	24,0	1,06	27	5076	350
1525027000	3/4-14	1,06	27,0	1,26	32	3626	250
1525033000	1-11	1,18	30,0	1,62	41	3626	250
1525042000	1.1/4-11	1,36	34,5	1,97	50	2901	200
1525048000	1.1/2-11	1,40	35,5	2,17	55	2538	175
1525051000	2-11	1,62	41,0	2,76	70	2175	150

METRIC HALF NIPLES WELDABLE

MEZZO NIPLES A SALDARE METRICO

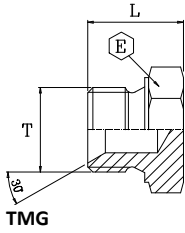


MNM

part nr. codice	thread T	L		E		Press. Max	
		[in]	[mm]	[in]	[mm]	[psi]	[bar]
1525110000	M10-1	0,55	14,0	0,55	14	6164	425
1525112000	M12-1,5	0,71	18,0	0,67	17	6164	425
1525114000	M14-1,5	0,71	18,0	0,75	19	6164	425
1525116000	M16-1,5	0,87	22,0	0,87	22	5801	400
1525118000	M18-1,5	0,87	22,0	0,95	24	5801	400
1525120000	M20-1,5	0,91	23,0	0,99	25	5076	350
1525122000	M22-1,5	0,91	23,0	1,06	27	5076	350
1525124000	M24-1,5	1,02	26,0	1,18	30	4351	300
1525126000	M26-1,5	1,02	26,0	1,26	32	3626	250

BSP MALE PLUG

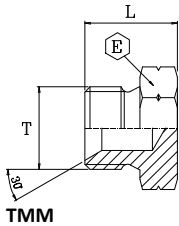
TAPPO MASCHIO BSP



part nr. codice	thread T	L		E		Press. Max	
		[in]	[mm]	[in]	[mm]	[psi]	[bar]
1527010000	1/8-28	0,57	14,5	0,55	14,0	6164	425
1527013000	1/4-19	0,71	18,0	0,75	19,0	6164	425
1527017000	3/8-19	0,83	21,0	0,87	22,0	5801	400
1527021000	1/2-14	0,93	23,5	1,06	27,0	5076	350
1527023000	5/8-14	1,02	26,0	1,18	30,0	4351	300
1527027000	3/4-14	1,06	27,0	1,26	32,0	3626	250
1527033000	1-11	1,22	31,0	1,62	41,0	3626	250
1527042000	1.1/4-11	1,32	33,5	1,97	50,0	2901	200
1527048000	1.1/2-11	1,42	36,0	2,17	55,0	2538	175
1527051000	2-11	1,62	41,0	2,76	70,0	2175	150
1527063000	2.1/2-11	1,58	40,0	3,35	85,0	2175	150

METRIC MALE PLUG

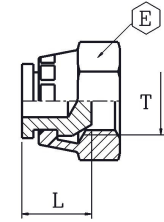
TAPPO MASCHIO METRICO



part nr. codice	thread T	L		E		Press. Max	
		[in]	[mm]	[in]	[mm]	[psi]	[bar]
1527110000	M10-1	0,57	14,5	0,55	14,0	6164	425
1527112000	M12-1,5	0,75	19,0	0,67	17,0	6164	425
1527114000	M14-1,5	0,71	18,0	0,75	19,0	6164	425
1527116000	M16-1,5	0,83	21,0	0,87	22,0	5801	400
1527118000	M18-1,5	0,87	22,0	0,95	24,0	5801	400
1527120000	M20-1,5	0,87	22,0	1,06	27,0	5076	350
1527122000	M22-1,5	0,87	22,0	1,06	27,0	5076	350
1527124000	M24-1,5	0,87	22,0	1,18	30,0	4351	300
1527126000	M26-1,5	0,95	24,0	1,26	32,0	3626	250
1527130000	M30-1,5	1,10	28,0	1,42	36,0	2901	200

BSP SWIVEL FEMALE PLUG

TAPPO FEMMINA GIREVOLE BSP

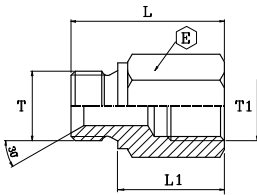


TFOG

part nr. codice	thread T	L		E		Press. Max	
		[in]	[mm]	[in]	[mm]	[psi]	[bar]
1530010000	1/8-28	0,43	11,0	0,55	14,0	6164	425
1530013000	1/4-19	0,53	13,5	0,75	19,0	6164	425
1530017000	3/8-19	0,59	15,0	0,87	22,0	5801	400
1530021000	1/2-14	0,69	17,5	1,06	27,0	5076	350
1530023000	5/8-14	0,63	16,0	1,18	30,0	4351	300
1530027000	3/4-14	0,69	17,5	1,26	32,0	3626	250
1530033000	1-11	0,75	19,0	1,50	38,0	3626	250
1530042000	1.1/4-11	0,91	23,0	1,97	50,0	2901	200
1530048000	1.1/2-11	0,93	23,5	2,17	55,0	2538	175
1530051000	2-11	1,01	25,6	2,76	70,0	2175	150

**BSP MALE/FIXED FEMALE NIPLES
EXTENDED**

COLONNETTA M/F BSP

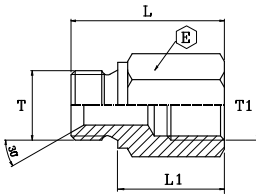


PMG

part nr. codice	thread T	thread T1	L		L1		E		Press. Max	
			[in]	[mm]	[in]	[mm]	[in]	[mm]	[psi]	[bar]
1545010100	1/8-28	1/8-28	0,99	25,0	0,67	17,0	0,55	14	4351	300
1545013128	1/4-19	1/4-19	1,22	31,0	0,78	20,0	0,75	19	4351	300
1545013130	1/4-19	1/4-19	1,18	30,0	0,75	19,0	0,75	19	4351	300
1545013139	1/4-19	1/4-19	2,05	52,0	1,61	41,0	0,75	19	4351	300
1545017170	3/8-19	3/8-19	1,38	35,0	0,87	22,0	0,87	22	4351	300
1545017171	3/8-19	3/8-19	2,13	54,0	1,62	41,0	0,87	22	4351	300
1545021210	1/2-14	1/2-14	1,77	45,0	1,22	31,0	1,06	27	3626	250
1545021211	1/2-14	1/2-14	2,36	60,0	1,81	46,0	1,06	27	3626	250
1545021214	1/2-14	1/2-14	1,57	40,0	1,02	26,0	1,06	27	3626	250
1545027270	3/4-14	3/4-14	1,85	47,0	1,22	31,0	1,26	32	2901	200
1545027271	3/4-14	3/4-14	2,96	75,0	2,29	58,0	1,26	32	2901	200
1545027273	3/4-14	3/4-14	2,67	68,0	2,04	52,0	1,26	32	2901	200
1545033330	1-11	1-11	1,97	50,0	1,26	32,0	1,62	41	2901	200
1545042420	1.1/4-11	1.1/4-11	2,44	62,0	1,65	42,0	1,97	50	2175	150
1545048480	1.1/2-11	1.1/2-11	2,44	62,0	1,58	40,0	2,17	55	2175	150
1545048481	1.1/2-11	1.1/2-11	3,78	96,0	2,92	74,0	2,17	55	2175	150
1545051510	2-11	2-11	4,33	110,0	3,35	85,0	2,76	70	2175	150

**BSP MALE/FIXED FEMALE REDUCING
NIPLES**

COLONNETTA DI RIDUZIONE M/F BSP



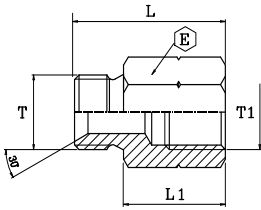
PRG

part nr. codice	thread T	thread T1	L		L1		E		Press. Max	
			[in]	[mm]	[in]	[mm]	[in]	[mm]	[psi]	[bar]
*1519013170	1/4-19	3/8-19	1,30	33,0	0,87	22,0	0,87	22	4351	300
*1519013210	1/4-19	1/2-14	1,46	37,0	1,02	26,0	1,06	27	4351	300
*1519017130	3/8-19	1/4-19	1,38	35,0	0,87	22,0	0,87	22	3626	250
*1519017210	3/8-19	1/2-14	1,54	39,0	1,02	26,0	1,06	27	3626	250
*1519021130	1/2-14	1/4-19	1,42	36,0	0,87	22,0	1,06	27	2901	200
*1519021170	1/2-14	3/8-19	1,42	36,0	0,87	22,0	1,06	27	2901	200
*1519021270	1/2-14	3/4-14	1,65	42,0	1,14	29,0	1,26	32	2901	200
*1519021330	1/2-14	1-11	1,77	45,0	1,22	31,0	1,62	41	2901	200
*1519027130	3/4-14	1/4-19	1,58	40,0	0,91	23,0	1,26	32	2901	200
*1519027170	3/4-14	3/8-19	1,58	40,0	0,91	23,0	1,26	32	2901	200
*1519027210	3/4-14	1/2-14	1,69	43,0	1,02	26,0	1,26	32	2901	200
*1519027330	3/4-14	1-11	1,97	50,0	1,30	33,0	1,62	41	2901	200
*1519027420	3/4-14	1.1/4-11	1,89	48,0	1,26	32,0	1,97	50	2901	200
*1519033270	1-11	3/4-14	1,97	50,0	1,22	31,0	1,62	41	2901	200
*1519033420	1-11	1.1/4-11	2,01	51,0	1,26	32,0	1,97	50	2901	200
*1519033480	1-11	1.1/2-11	2,05	52,0	1,26	32,0	2,17	55	2901	200
*1519042270	1.1/4-11	3/4-14	2,11	53,5	1,26	32,0	1,97	50	2175	150
*1519042330	1.1/4-11	1-11	2,11	53,5	1,26	32,0	1,97	50	2175	150
*1519042480	1.1/4-11	1.1/2-11	2,11	53,5	1,26	32,0	2,17	55	2175	150
*1519048330	1.1/2-11	1-11	2,17	55,0	1,30	33,0	2,17	55	2175	150
*1519048420	1.1/2-11	1.1/4-11	2,17	55,0	1,30	33,0	2,17	55	2175	150
*1519048510	1.1/2-11	2-11	2,56	65,0	1,69	43,0	2,76	70	2175	150
*1519051420	2-11	1.1/4-11	2,68	68,0	1,69	43,0	2,76	70	2175	150
*1519051480	2-11	1.1/2-11	2,68	68,0	1,69	43,0	2,76	70	2175	150

* ON REQUEST / SU RICHIESTA

METRIC MALE/FIXED FEMALE NIPLES
EXTENDED

COLONNETTA M/F METRICA

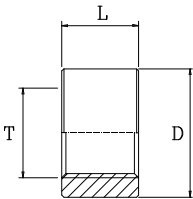


PMM

part nr. codice	thread T	thread T1	L		L1		E		Press. Max	
			[in]	[mm]	[in]	[mm]	[in]	[mm]	[psi]	[bar]
1545112120	M12-1,5	M12-1,5	1,18	30,0	0,75	19,0	0,67	17	4351	300
1545112121	M12-1,5	M12-1,5	2,17	55,0	1,73	44,0	0,67	17	4351	300
1545114140	M14-1,5	M14-1,5	1,89	48,0	1,46	37,0	0,75	19	4351	300
1545114141	M14-1,5	M14-1,5	2,36	60,0	1,93	49,0	0,75	19	4351	300
1545116160	M16-1,5	M16-1,5	1,38	35,0	0,85	21,5	0,87	22	4351	300
1545116161	M16-1,5	M16-1,5	2,13	54,0	1,60	40,5	0,87	22	4351	300
1545118180	M18-1,5	M18-1,5	1,30	33,0	0,77	19,5	0,95	24	4351	300
1545118181	M18-1,5	M18-1,5	1,77	45,0	1,24	31,5	0,95	24	4351	300
1545120200	M20-1,5	M20-1,5	2,36	60,0	1,79	45,5	1,06	27	3626	250
1545122220	M22-1,5	M22-1,5	2,36	60,0	1,79	45,5	1,06	27	3626	250

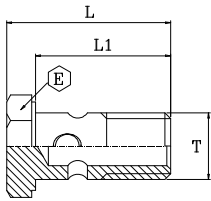
BSP WELDABLE FEMALE

BORCHIA A SALDARE BSP



BG

part nr. codice	thread T	L		D		Press. Max	
		[in]	[mm]	[in]	[mm]	[psi]	[bar]
1550010140	1/8-28	0,55	14,0	0,79	20,0	6164	425
1550013160	1/4-19	0,63	16,0	0,87	22,0	6164	425
1550017170	3/8-19	0,67	17,0	1,02	26,0	5801	400
1550021180	1/2-14	0,71	18,0	1,18	30,0	5076	350
1550023200	5/8-14	0,79	20,0	1,26	32,0	4351	300
1550027270	3/4-14	0,79	20,0	1,50	38,0	3626	250
1550033330	1-11	0,99	25,0	1,81	46,0	3626	250
1550042420	1.1/4-11	1,02	26,0	2,21	56,0	2901	200
1550048480	1.1/2-11	1,18	30,0	2,44	62,0	2538	175
1550051510	2-11	1,18	30,0	2,76	70,0	2175	150

BSP BOLT
BULLONE FORATO BSP

BFG

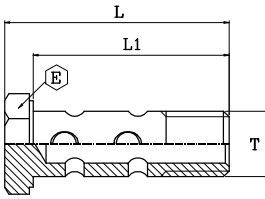
part nr. codice	thread T	L		L1		E		Press. Max	
		[in]	[mm]	[in]	[mm]	[in]	[mm]	[psi]	[bar]
1555010000	1/8-28	0,95	24,0	0,77	19,5	0,55	14,0	4351	300
1555013312	1/4-19	1,36	34,5	1,12	28,5	0,75	19,0	4351	300
1555017400	3/8-19	1,60	40,5	1,30	33,0	0,87	22,0	4351	300
1555021460	1/2-14	1,81	46,0	1,50	38,0	1,06	27,0	3626	250
1555023500	5/8-14	1,97	50,0	1,65	42,0	1,18	30,0	2901	200
1555027690	3/4-14	2,21	56,0	1,85	47,0	1,26	32,0	2901	200
1555033860	1-11	2,72	69,0	2,29	58,0	1,62	41,0	2175	150

Two copper washers for bolt must be ordered separately

Le due rondelle di rame per bullone devono essere ordinate separatamente.

BSP DOUBLE BOLT

BULLONE FORATO DOPPIO BSP

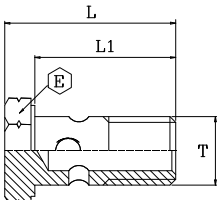


BFDG

part nr. codice	thread T	L		L1		E		Press. Max	
		[in]	[mm]	[in]	[mm]	[in]	[mm]	[psi]	[bar]
1558110000	1/8-28	1,44	36,5	1,20	30,5	0,55	14,0	2901	200
1558113000	1/4-19	1,93	49,0	1,69	43,0	0,75	19,0	2901	200
1558117000	3/8-19	2,25	57,0	1,95	49,5	0,87	22,0	2901	200
1558121000	1/2-14	2,84	72,0	2,48	63,0	1,06	27,0	2901	200
1558127000	3/4-14	3,41	86,5	3,05	77,5	1,26	32,0	2175	150
1558133000	1-11	4,27	108,5	3,84	97,5	1,62	41,0	2175	150

METRIC BOLT

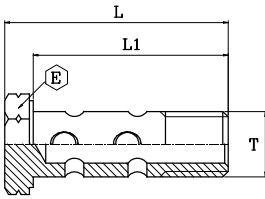
BULLONE FORATO METRICO



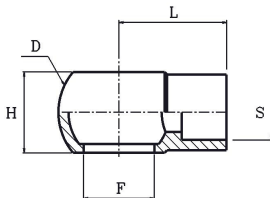
BFM

part nr. codice	thread T	L		L1		E		Press. Max	
		[in]	[mm]	[in]	[mm]	[in]	[mm]	[psi]	[bar]
1555110250	M10-1	0,95	24,0	0,77	19,5	0,55	14,0	4351	300
1555112312	M12-1,5	1,24	31,5	1,00	25,5	0,67	17,0	4351	300
1555114330	M14-1,5	1,34	34,0	1,12	28,5	0,75	19,0	4351	300
1555116400	M16-1,5	1,60	40,5	1,30	33,0	0,87	22,0	4351	300
1555118440	M18-1,5	1,75	44,5	1,44	36,5	0,95	24,0	3626	250
1555122460	M22-1,5	1,83	46,5	1,52	38,5	1,06	27,0	2901	200
1555126560	M26-1,5	2,21	56,0	1,79	45,5	1,26	32,0	2901	200

Two copper washers for bolt must be ordered separately
 Le due rondelle di rame per bullone devono essere ordinate separatamente.

METRIC DOUBLE BOLT
BULLONE FORATO DOPPIO METRICO

BFDM

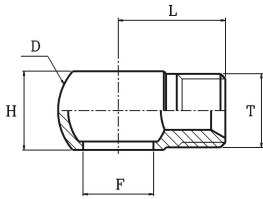
part nr. codice	thread T	L		L1		E		Press. Max	
		[in]	[mm]	[in]	[mm]	[in]	[mm]	[psi]	[bar]
1558010000	M10-1	1,44	36,5	1,20	30,5	0,55	14,0	2901	200
1558012000	M12-1,5	1,89	48,0	1,65	42,0	0,67	17,0	2901	200
1558014000	M14-1,5	1,93	49,0	1,69	43,0	0,75	19,0	2901	200
1558016000	M16-1,5	2,21	56,0	1,93	49,0	0,87	22,0	2901	200
1558018000	M18-1,5	2,56	65,0	0,95	24,0	0,95	24,0	2901	200
1558022000	M22-1,5	2,84	72,0	2,52	64,0	1,06	27,0	2901	200

BSP WELDABLE BANJO
OCCHIO A SALDARE BSP

OSG

part nr. codice	F	S		D		H		L		Press. Max	
		[in]	[mm]	[in]	[mm]	[in]	[mm]	[in]	[mm]	[psi]	[bar]
1560013060	1/4	0,24	6,0	0,95	24,0	0,55	14,0	0,95	24,0	4351	300
1560013080	1/4	0,32	8,0	0,95	24,0	0,55	14,0	0,95	24,0	4351	300
1560013100	1/4	0,39	10,0	0,95	24,0	0,55	14,0	0,95	24,0	4351	300
1560017100	3/8	0,39	10,0	1,10	28,0	0,71	18,0	1,10	28,0	4351	300
1560017120	3/8	0,47	12,0	1,10	28,0	0,71	18,0	1,10	28,0	4351	300
1560021150	1/2	0,59	15,0	1,38	35,0	0,87	22,0	1,26	32,0	3626	250
1560021160	1/2	0,63	16,0	1,38	35,0	0,87	22,0	1,26	32,0	3626	250
1560027200	3/4	0,79	20,0	1,77	45,0	1,14	29,0	1,58	40,0	2901	200
1560033270	1	1,06	27,0	2,29	58,0	1,46	37,0	2,25	57,0	2175	150

BSP THREAD BANJO

OCCHIO FILETTATO BSP



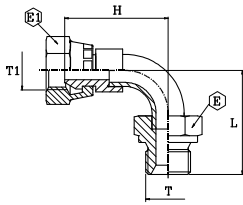
OFG

part nr. codice	F	thread T	D		H		L		Press. Max	
			[in]	[mm]	[in]	[mm]	[in]	[mm]	[psi]	[bar]
1564013130	1/4	1/4-19	0,95	24,0	0,55	14,0	0,99	25,0	3626	250
1564017170	3/8	3/8-19	1,10	28,0	0,71	18,0	1,10	28,0	3626	250
1564021210	1/2	1/2-14	1,38	35,0	0,87	22,0	1,26	32,0	3626	250
1564027270	3/4	3/4-14	1,77	45,0	1,14	29,0	1,58	40,0	2901	200
*1564033330	1	1-11	2,36	60,0	1,46	37,0	1,73	44,0	2175	150

*ON REQUEST/ SU RICHIESTA

ADAPTER M/F BSP 60° FLARE 90° ELBOW

ADATTATORE 90° M/F BSP SV.60°

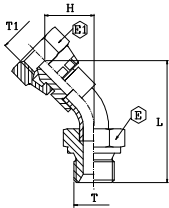


CMG90

part nr. codice	thread T	thread T1	L		H		E		E1		Press. Max	
			[in]	[mm]	[in]	[mm]	[in]	[mm]	[in]	[mm]	[psi]	[bar]
1580001010	1/8-28	1/8-28	1,16	29,5	1,17	29,7	0,55	14	0,55	14	5076	350
1580001313	1/4-19	1/4-19	1,26	32,0	1,21	30,8	0,75	19	0,75	19	5076	350
1580001717	3/8-19	3/8-19	1,46	37,0	1,52	38,5	0,87	22	0,87	22	4351	300
1580002121	1/2-14	1/2-14	1,67	42,5	1,79	45,5	1,06	27	1,06	27	3626	250
1580002727	3/4-14	3/4-14	2,29	58,0	2,20	55,8	1,26	32	1,26	32	2901	200
1580003333	1-11	1-11	2,76	70,0	2,57	65,2	1,62	41	1,50	38	2901	200
1580014242	1.1/4-11	1.1/4-11	3,09	78,5	2,94	74,5	1,97	50	1,97	50	2538	175
1580014848	1.1/2-11	1.1/2-11	3,66	93,0	3,51	89,1	2,17	55	2,17	55	2175	150
1580015151	2-11	2-11	4,77	121,0	4,45	112,9	2,76	70	2,76	70	2175	150

*With thrust nut/ con dado spinato

ADAPTER M/F BSP 60° FLARE 45° ELBOW ADATTATORE 45° M/F BSP SV.60°

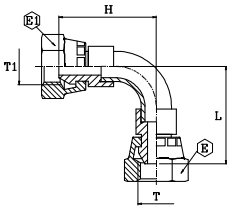


CMG45

part nr. codice	thread T	thread T1	L		H		E		E1		Press. Max	
			[in]	[mm]	[in]	[mm]	[in]	[mm]	[in]	[mm]	[psi]	[bar]
1582001010	1/8-28	1/8-28	1,33	34,0	0,61	15,5	0,55	14	0,55	14	5076	350
1582001313	1/4-19	1/4-19	1,74	44,1	0,67	17,1	0,75	19	0,75	19	5076	350
1582001717	3/8-19	3/8-19	2,05	52,0	0,83	21,0	0,87	22	0,87	22	5076	350
1582002121	1/2-14	1/2-14	2,10	53,3	0,94	23,8	1,06	27	1,06	27	4351	300
1582002727	3/4-14	3/4-14	2,62	66,4	1,02	25,9	1,26	32	1,26	32	3626	250
1582003333	1-11	1-11	3,38	85,9	1,34	33,9	1,50	38	1,50	38	2901	200
*1582014242	1.1/4-11	1.1/4-11	3,20	81,3	1,25	31,8	1,97	50	1,97	50	2901	200
*1582014848	1.1/2-11	1.1/2-11	4,01	101,9	1,57	39,9	2,17	55	2,17	55	2538	175
*1582015151	2-11	2-11	5,21	132,2	2,06	52,2	2,76	70	2,76	70	2175	150

*With thrust nut/ con dado spinato

ADAPTER F/F BSP 60° FLARE 90° ELBOW ADATTATORE 90° F/F BSP SV.60°



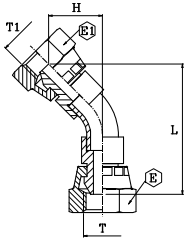
CFG90

part nr. codice	thread T	thread T1	L		H		E		E1		Press. Max	
			[in]	[mm]	[in]	[mm]	[in]	[mm]	[in]	[mm]	[psi]	[bar]
1581001313	1/4-19	1/4-19	1,21	30,8	1,21	30,8	0,75	19	0,75	19	5076	350
1581001717	3/8-19	3/8-19	1,52	38,5	1,52	38,5	0,87	22	0,87	22	4351	300
1581002121	1/2-14	1/2-14	1,79	45,5	1,79	45,5	1,06	27	1,06	27	3626	250
1581002727	3/4-14	3/4-14	2,20	55,8	2,20	55,8	1,26	32	1,26	32	2901	200
1581003333	1-11	1-11	2,57	65,2	2,57	65,2	1,50	38	1,50	38	2901	200
*1581014242	1.1/4-11	1.1/4-11	2,94	74,5	2,94	74,5	1,97	50	1,97	50	2538	175
*1581014848	1.1/2-11	1.1/2-11	3,51	89,1	3,51	89,1	2,17	55	2,17	55	2175	150
*1581015151	2-11	2-11	4,45	112,9	4,45	112,9	2,76	70	2,76	70	2175	150

*With thrust nut/ con dado spinato

ADAPTER F/F BSP 60° FLARE 45° ELBOW

ADATTATORE 45° F/F BSP SV.60°



*CFG45

part nr. codice	thread T	thread T1	L		H		E		E1		Press. Max	
			[in]	[mm]	[in]	[mm]	[in]	[mm]	[in]	[mm]	[psi]	[bar]
1583001313	1/4-19	1/4-19	1,69	42,9	0,67	17,1	0,75	19	0,75	19	5076	350
1583001717	3/8-19	3/8-19	2,11	53,5	0,83	21,0	0,87	22	0,87	22	4351	300
1583002121	1/2-14	1/2-14	2,22	56,3	0,94	23,8	1,06	27	1,06	27	3626	250
1583002727	3/4-14	3/4-14	2,53	64,2	1,02	25,9	1,26	32	1,26	32	2901	200
1583003333	1-11	1-11	3,20	81,1	1,34	33,9	1,50	38	1,50	38	2901	200
*1583014242	1.1/4-11	1.1/4-11	3,05	77,3	1,25	31,8	1,97	50	1,97	50	2538	175
*1583014848	1.1/2-11	1.1/2-11	3,86	98,0	1,57	39,9	2,17	55	2,17	55	2175	150
*1583015151	2-11	2-11	4,89	124,1	2,06	52,2	2,76	70	2,76	70	2175	150

*With thrust nut/ con dado spinato