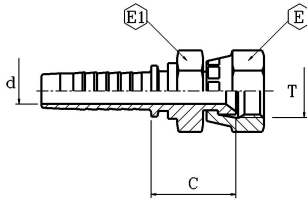


**JIS BSP FEMALE 60° FLARE WITH
HEXAGON, for Toyota machines**

**FEMMINA JIS BSP SV. 60°, per
macchine Toyota**

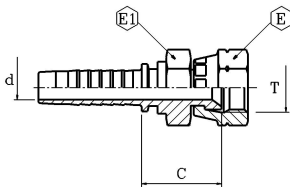


PFMJG

part nr. codice	hose ID		size	thread T	d		E		E1		cut-off C	
	[in]	[mm]			[in]	[mm]	[in]	[mm]	[in]	[mm]	[in]	[mm]
0416270413	1/4"	6,4	04	1/4-19	0,16	4,0	0,75	19	0,75	19	0,77	19,5
0416270617	3/8"	9,5	06	3/8-19	0,28	7,0	0,87	22	0,75	19	0,91	23
0416270821	1/2"	12,7	08	1/2-14	0,37	9,5	1,06	27	1,06	27	1,02	26
0416271227	3/4"	19	12	3/4-14	0,59	15,0	1,26	32	1,26	32	1,12	28,5
0416271633	1"	25,4	16	1-11	0,79	20,0	1,50	38	1,42	36	1,22	31

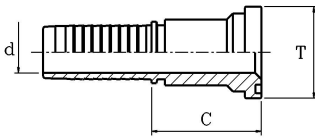
**JIS METRIC FEMALE 60° FLARE
WITH HEXAGON, for Komatsu
machines**

**FEMMINA JIS METRICA SV. 60°, per macchine
Komatsu**

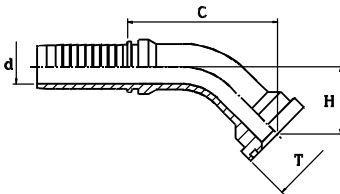


PFMJM

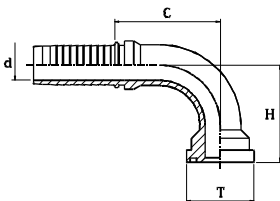
part nr. codice	hose ID		size	thread T	d		E		E1		cut-off C	
	[in]	[mm]			[in]	[mm]	[in]	[mm]	[in]	[mm]	[in]	[mm]
0416280414	1/4"	6,4	04	M14-1.5	0,16	4,0	0,75	19	0,75	19	0,85	21,5
0416280516	5/16"	8,0	05	M16-1.5	0,22	5,5	0,87	22	0,75	19	0,89	22,5
0416280614	3/8"	9,5	06	M14-1.5	0,28	7,0	0,75	19	0,75	19	0,87	22
0416280618	3/8"	9,5	06	M18-1.5	0,28	7,0	0,95	24	0,87	22	1,00	25,5
0416280822	1/2"	12,7	08	M22-1.5	0,37	9,5	1,06	27	1,06	27	1,00	25,5
0416280824	1/2"	12,7	08	M24-1.5	0,37	9,5	1,18	30	1,06	27	1,00	25,5
0416281024	5/8"	16,0	10	M24-1.5	0,47	12,0	1,18	30	1,18	30	1,00	25,5
0416281230	3/4"	19,0	12	M30-1.5	0,59	15,0	1,42	36	1,42	36	1,24	31,5
0416281633	1"	25,4	16	M33-1.5	0,79	20,0	1,62	41	1,42	36	1,36	34,5
0416282036	1.1/4"	31,8	20	M36-1.5	1,02	26,0	1,81	46	1,81	46	1,50	38
0416282442	1.1/2"	38,1	24	M42-1.5	1,26	32,0	1,97	50	1,97	50	1,64	41,5

JIS STRAIGHT FLANGE
FLANGIA DIRITTA JIS

JFL

part nr. codice	hose ID			size	T	flange		d		cut-off C	
	[in]	[mm]				[in]	[mm]	[in]	[mm]	[in]	[mm]
0459061023	5/8	16	10	5/8	1,34	34	0,47	12,0	2,09	53	

JIS 45° FLANGE
FLANGIA JIS 45°

JFL-45

part nr. codice	hose ID			size	T	flange		d		cut-off C		drop H	
	[in]	[mm]				[in]	[mm]	[in]	[mm]	[in]	[mm]	[in]	[mm]
0459081023	5/8	16	10	5/8	1,34	34	0,47	12,0	2,28	58	0,87	22	

JIS 90° FLANGE
FLANGIA JIS 90°

JFL-90

part nr. codice	hose ID			size	T	flange		d		cut-off C		drop H	
	[in]	[mm]				[in]	[mm]	[in]	[mm]	[in]	[mm]	[in]	[mm]
0459071023	5/8	16	10	5/8	1,34	34	0,47	12,0	1,61	41	1,77	45	