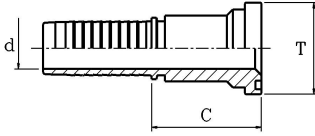


FLANGE SAE 3000

FLANGIA SAE 3000

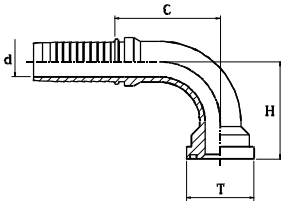


SFL-3

part nr. codice	hose ID			T			d		cut-off C	
	[in]	[mm]	size	[in]	[mm]	size	[in]	[mm]	[in]	[mm]
0454060821	1/2"	12,7	08	1,19	30,2	1/2	0,37	9,5	1,77	45,0
0454060827	1/2"	12,7	08	1,50	38,1	3/4	0,37	9,5	1,97	50,0
0454061227	3/4"	19,0	12	1,50	38,1	3/4	0,59	15,0	1,97	50,0
0454061233	3/4"	19,0	12	1,75	44,5	1	0,59	15,0	2,09	53,0
0454061633	1"	25,4	16	1,75	44,5	1	0,79	20,0	2,13	54,0
0454061642	1"	25,4	16	2,00	50,8	1.1/4	0,79	20,0	2,25	57,0
0454062042	1.1/4"	31,8	20	2,00	50,8	1.1/4	1,02	26,0	2,32	59,0
0454062048	1.1/4"	31,8	20	2,38	60,4	1.1/2	1,02	26,0	2,44	62,0
0454062448	1.1/2"	38,1	24	2,38	60,4	1.1/2	1,26	32,0	2,44	62,0
0454062451	1.1/2"	38,1	24	2,81	71,4	2	1,26	32,0	2,64	67,0
0454063251	2"	50,8	32	2,81	71,4	2	1,73	44,0	2,68	68,0
0454063263	2"	50,8	32	3,31	84,1	2.1/2	1,73	44,0	2,76	70,0
0454064063	2.1/2"	63,0	40	3,31	84,1	2.1/2	2,17	55,0	2,99	76,0
0454064876	3"	75,5	48	4,00	101,6	3	2,68	68,0	3,43	87,0

FLANGE SAE 3000 90° ELBOW

FLANGIA 90° SAE 3000



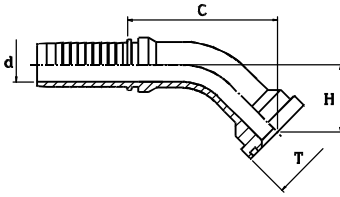
SFL-3-90

part nr. codice	hose ID			T			d		cut-off C		drop H	
	[in]	[mm]	size	[in]	[mm]	size	[in]	[mm]	[in]	[mm]	[in]	[mm]
0455060821	1/2"	12,7	08	1,19	30,2	1/2	0,37	9,5	1,54	39,0	1,54	39,0
0455060827	1/2"	12,7	08	1,50	38,1	3/4	0,37	9,5	1,62	41,0	1,73	44,0
0455061227	3/4"	19,0	12	1,50	38,1	3/4	0,59	15,0	2,05	52,0	2,17	55,0
0455061233	3/4"	19,0	12	1,75	44,5	1	0,59	15,0	2,21	56,0	2,29	58,0
0455061633	1"	25,4	16	1,75	44,5	1	0,79	20,0	2,72	69,0	2,48	63,0
0455061642	1"	25,4	16	2,00	50,8	1.1/4	0,79	20,0	2,72	69,0	2,80	71,0
0455062042	1.1/4"	31,8	20	2,00	50,8	1.1/4	1,02	26,0	3,43	87,0	2,96	75,0
0455062048	1.1/4"	31,8	20	2,38	60,4	1.1/2	1,02	26,0	3,35	85,0	3,35	85,0
0455062448	1.1/2"	38,1	24	2,38	60,4	1.1/2	1,18	30,0	3,90	99,0	3,74	95,0
0455062451	1.1/2"	38,1	24	2,81	71,4	2	1,18	30,0	4,14	105,0	3,90	99,0
0455063251	2"	50,8	32	2,81	71,4	2	1,57	40,0	4,93	125,0	4,53	115,0
0455063263	2"	50,8	32	3,31	84,1	2.1/2	1,57	40,0	4,93	125,0	4,73	120,0
*0455064063	2.1/2"	63,0	40	3,31	84,1	2.1/2	2,17	55,0	3,55	90,0	3,41	86,5
*0455064876	3"	75,5	48	4,00	101,6	3	2,68	68,0	4,53	115,0	4,17	106,0

\*WELDED / SALDATA

FLANGE SAE 3000 45° ELBOW

FLANGIA 45° SAE 3000



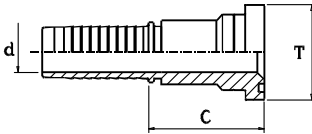
SFL-3-45

part nr. codice	hose ID			T			d		cut-off C		drop H	
	[in]	[mm]	size	[in]	[mm]	size	[in]	[mm]	[in]	[mm]	[in]	[mm]
0457060821	1/2"	12,7	08	1,19	30,2	1/2	0,37	9,5	2,01	51,0	0,87	22,0
0457060827	1/2"	12,7	08	1,50	38,1	3/4	0,37	9,5	2,13	54,0	0,99	25,0
0457061227	3/4"	19,0	12	1,50	38,1	3/4	0,59	15,0	2,76	70,0	1,18	30,0
0457061233	3/4"	19,0	12	1,75	44,5	1	0,59	15,0	2,88	73,0	1,22	31,0
0457061633	1"	25,4	16	1,75	44,5	1	0,79	20,0	3,23	82,0	1,38	35,0
0457061642	1"	25,4	16	2,00	50,8	1.1/4	0,79	20,0	3,43	87,0	1,46	37,0
0457062042	1.1/4"	31,8	20	2,00	50,8	1.1/4	1,02	26,0	3,94	100,0	1,85	47,0
0457062048	1.1/4"	31,8	20	2,38	60,4	1.1/2	1,02	26,0	4,02	102,0	1,93	49,0
0457062448	1.1/2"	38,1	24	2,38	60,4	1.1/2	1,18	30,0	4,37	111,0	1,97	50,0
0457062451	1.1/2"	38,1	24	2,81	71,4	2	1,18	30,0	4,45	113,0	2,05	52,0
0457063251	2"	50,8	32	2,81	71,4	2	1,57	40,0	5,23	183,0	1,85	47,0
*0458064063	2.1/2"	63,0	40	3,31	84,1	2.1/2	2,17	55,0	2,96	75,0	1,18	30,0
*0458064876	3"	75,5	48	4,00	101,6	3	2,68	68,0	3,74	95,0	1,38	35,0

\* WELDED / SALDATA

FLANGE SAE 6000

FLANGIA SAE 6000

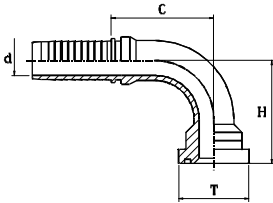


SFL-6

part nr. codice	hose ID			T			d		cut-off C	
	[in]	[mm]	size	[in]	[mm]	size	[in]	[mm]	[in]	[mm]
0465060821	1/2"	12,7	08	1,25	31,7	1/2	0,37	9,5	1,81	46,0
0465060827	1/2"	12,7	08	1,63	41,3	3/4	0,37	9,5	2,09	53,0
0465061227	3/4"	19,0	12	1,63	41,3	3/4	0,59	15,0	2,13	54,0
0465061233	3/4"	19,0	12	1,88	47,6	1	0,59	15,0	2,36	60,0
0465061633	1"	25,4	16	1,88	47,6	1	0,79	20,0	2,40	61,0
0465061642	1"	25,4	16	2,13	54,0	1.1/4	0,79	20,0	2,68	68,0
0465062042	1.1/4"	31,8	20	2,13	54,0	1.1/4	1,02	26,0	2,76	70,0
0465062048	1.1/4"	31,8	20	2,50	63,5	1.1/2	1,02	26,0	2,99	76,0
0465062448	1.1/2"	38,1	24	2,50	63,5	1.1/2	1,26	32,0	2,99	76,0
0465062451	1.1/2"	38,1	24	3,13	79,4	2	1,26	32,0	3,35	85,0
0465063251	2"	50,8	32	3,13	79,4	2	1,73	44,0	3,35	85,0

FLANGE SAE 6000 90° ELBOW

FLANGIA 90° SAE 6000

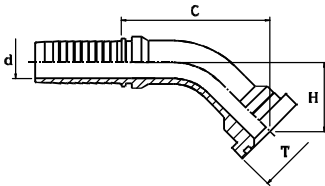


SFL-6-90

part nr. codice	hose ID			T			d		cut-off C		drop H	
	[in]	[mm]	size	[in]	[mm]	size	[in]	[mm]	[in]	[mm]	[in]	[mm]
0467060821	1/2"	12,7	08	1,25	31,7	1/2	0,37	9,5	1,54	39,0	1,54	39,0
0467060827	1/2"	12,7	08	1,63	41,3	3/4	0,37	9,5	1,54	39,0	1,69	43,0
0467061227	3/4"	19,0	12	1,63	41,3	3/4	0,59	15,0	2,21	56,0	2,25	57,0
0467061233	3/4"	19,0	12	1,88	47,6	1	0,59	15,0	2,21	56,0	2,52	64,0
0467061633	1"	25,4	16	1,88	47,6	1	0,79	20,0	2,76	70,0	2,76	70,0
0467061642	1"	25,4	16	2,13	54,0	1.1/4	0,79	20,0	2,76	70,0	3,03	77,0
0467062042	1.1/4"	31,8	20	2,13	54,0	1.1/4	1,02	26,0	3,27	83,0	3,19	81,0
0467062048	1.1/4"	31,8	20	2,50	63,5	1.1/2	1,02	26,0	3,35	85,0	3,78	96,0
0467062448	1.1/2"	38,1	24	2,50	63,5	1.1/2	1,18	30,0	4,02	102,0	4,22	107,0
0467062451	1.1/2"	38,1	24	3,13	79,4	2	1,18	30,0	3,90	99,0	4,57	116,0
0467063251	2"	50,8	32	3,13	79,4	2	1,57	40,0	4,93	125,0	5,36	136,0

FLANGE SAE 6000 45° ELBOW

FLANGIA 45° SAE 6000

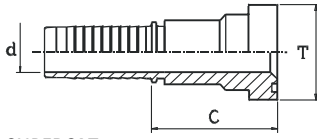


SFL-6-45

part nr. codice	hose ID			T			d		cut-off C		drop H	
	[in]	[mm]	size	[in]	[mm]	size	[in]	[mm]	[in]	[mm]	[in]	[mm]
0469060821	1/2"	12,7	08	1,25	31,7	1/2	0,37	9,5	2,01	51,0	0,87	22,0
0469060827	1/2"	12,7	08	1,63	41,3	3/4	0,37	9,5	2,25	57,0	1,10	28,0
0469061227	3/4"	19,0	12	1,63	41,3	3/4	0,59	15,0	2,84	72,0	1,18	30,0
0469061233	3/4"	19,0	12	1,88	47,6	1	0,59	15,0	2,99	76,0	1,34	34,0
0469061633	1"	25,4	16	1,88	47,6	1	0,79	20,0	3,35	85,0	1,42	36,0
0469061642	1"	25,4	16	2,13	54,0	1.1/4	0,79	20,0	3,55	90,0	1,62	41,0
0469062042	1.1/4"	31,8	20	2,13	54,0	1.1/4	1,02	26,0	4,10	104,0	2,01	51,0
0469062048	1.1/4"	31,8	20	2,50	63,5	1.1/2	1,02	26,0	4,29	109,0	2,21	56,0
0469062448	1.1/2"	38,1	24	2,50	63,5	1.1/2	1,18	30,0	4,65	118,0	2,25	57,0
0469062451	1.1/2"	38,1	24	3,13	79,4	2	1,18	30,0	5,00	127,0	2,60	66,0
0469063251	2"	50,8	32	3,13	79,4	2	1,57	40,0	5,71	145,0	2,80	71,0

**FLANGE SUPERCAT**

**FLANGIA SUPERCAT**

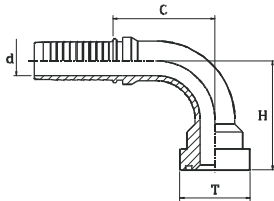


**SUPERCAT**

part nr. codice	hose ID			T			d		cut-off C	
	[in]	[mm]	size	[in]	[mm]	size	[in]	[mm]	[in]	[mm]
0465091227	3/4"	19,0	12	1,63	41,3	3/4	0,59	15,0	2,25	57,0
0465091233	3/4"	19,0	12	1,88	47,6	1	0,59	15,0	2,52	64,0
0465091633	1"	25,4	16	1,88	47,6	1	0,79	20,0	2,56	65,0
0465091642	1"	25,4	16	2,13	54,0	1.1/4	0,79	20,0	2,84	72,0
0465092042	1.1/4"	31,8	20	2,13	54,0	1.1/4	1,02	26,0	2,92	74,0
0465092048	1.1/4"	31,8	20	2,50	63,5	1.1/2	1,02	26,0	3,07	78,0
0465092448	1.1/2"	38,1	24	2,50	63,5	1.1/2	1,26	32,0	3,15	80,0

**FLANGE SUPERCAT 90° ELBOW**

**FLANGIA 90° SUPERCAT**

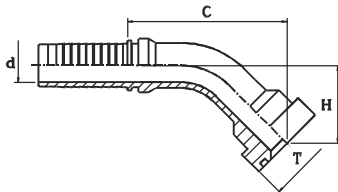


**SUPERCAT-90**

part nr. codice	hose ID			T			d		cut-off C		drop H	
	[in]	[mm]	size	[in]	[mm]	size	[in]	[mm]	[in]	[mm]	[in]	[mm]
0467091227	3/4"	19,0	12	1,63	41,3	3/4	0,59	15,0	2,21	56,0	2,40	61,0
0467091233	3/4"	19,0	12	1,88	47,6	1	0,59	15,0	2,21	56,0	2,56	65,0
0467091633	1"	25,4	16	1,88	47,6	1	0,79	20,0	2,80	71,0	3,07	78,0
0467091642	1"	25,4	16	2,13	54,0	1.1/4	0,79	20,0	2,80	71,0	3,31	84,0
0467092042	1.1/4"	31,8	20	2,13	54,0	1.1/4	1,02	26,0	3,55	90,0	3,39	86,0
0467092048	1.1/4"	31,8	20	2,50	63,5	1.1/2	1,02	26,0	3,55	90,0	3,62	92,0
0467092448	1.1/2"	38,1	24	2,50	63,5	1.1/2	1,18	30,0	4,26	108,0	4,10	104,0

**FLANGE SUPERCAT 45° ELBOW**

**FLANGIA 45° SUPERCAT**

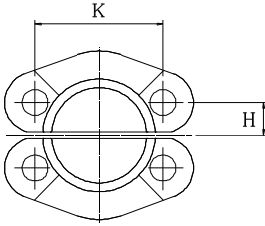


**SUPERCAT-45**

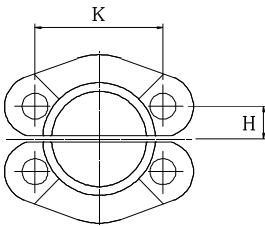
part nr. codice	hose ID			T			d		cut-off C		drop H	
	[in]	[mm]	size	[in]	[mm]	size	[in]	[mm]	[in]	[mm]	[in]	[mm]
0469091227	3/4"	19,0	12	1,63	41,3	3/4	0,59	15,0	2,96	75,0	1,30	33,0
0469091233	3/4"	19,0	12	1,88	47,6	1	0,59	15,0	3,11	79,0	1,46	37,0
0469091633	1"	25,4	16	1,88	47,6	1	0,79	20,0	3,62	92,0	1,62	41,0
0469091642	1"	25,4	16	2,13	54,0	1.1/4	0,79	20,0	3,62	92,0	1,65	42,0
0469092042	1.1/4"	31,8	20	2,13	54,0	1.1/4	1,02	26,0	4,41	112,0	1,73	44,0
0469092048	1.1/4"	31,8	20	2,50	63,5	1.1/2	1,02	26,0	4,49	114,0	1,89	48,0
0469092448	1.1/2"	38,1	24	2,50	63,5	1.1/2	1,18	30,0	4,93	125,0	1,97	50,0

O-ring for flange must be ordered separately

L'O-ring per le flange deve essere ordinato separatamente.

**CUT SPLIT FLANGES 3000 P.S.I**
**SEMIFLANGE TAGLIATE 3000 P.S.I**

**AFS-3**

part nr. codice	T			K		H	
	[in]	[mm]	size	[in]	[mm]	[in]	[mm]
2237802121	1,19	30,2	1/2"	1,50	38,10	0,34	8,74
2237802727	1,50	38,1	3/4"	1,88	47,63	0,44	11,13
2237803333	1,75	44,5	1"	2,06	52,37	0,52	13,08
2237804242	2,00	50,8	1.1/4"	2,31	58,72	0,59	15,09
2237804848	2,38	60,4	1.1/2"	2,75	69,85	0,70	17,86
2237805151	2,81	71,4	2"	3,06	77,77	0,84	21,44
2237805555	3,31	84,1	2.1/2"	3,50	88,90	1,00	25,40
2237806565	4,00	101,6	3"	4,19	106,38	1,22	30,96
2237807070	4,50	114,3	3.1/2"	4,75	120,65	1,38	34,92
2237808080	5,00	127,0	4"	5,13	130,18	1,53	38,88

**CUT SPLIT FLANGES 6000 P.S.I**
**SEMIFLANGE TAGLIATE 6000 P.S.I**

**AFS-6**

part nr. codice	T			K		H	
	[in]	[mm]	size	[in]	[mm]	[in]	[mm]
2237902121	1,25	31,7	1/2"	1,60	40,49	0,36	9,12
2237902727	1,63	41,3	3/4"	2,00	50,80	0,47	11,91
2237903333	1,88	47,6	1"	2,25	57,15	0,55	13,89
2237904242	2,13	54,0	1.1/4"	2,63	66,68	0,63	15,88
2237904848	2,50	63,5	1.1/2"	3,13	79,38	0,72	18,26
2237905151	3,13	79,4	2"	3,81	96,82	0,88	22,23