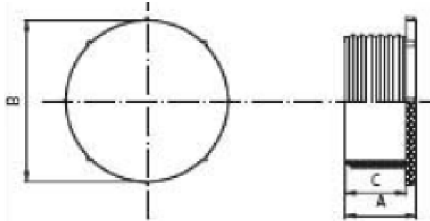


**BSP MALE PLUG**

Available also for other thread type

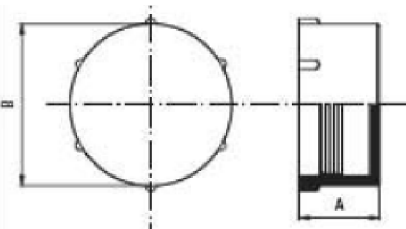

**TAPPO MASCHIO BSP**

Sono disponibili per altri tipi di filetto

part nr. codice	size dimensione	A		B		C	
		[in]	[mm]	[in]	[mm]	[in]	[mm]
<i>To protect Female Thread / Protezione Filetto Femmina</i>							
5201801017	3/8"	0,57	14,5	0,77	19,5	0,35	9,0
5201801021	1/2"	0,59	15,0	1,00	25,5	0,35	9,0
5201801027	3/4"	0,67	17,0	1,18	30,0	0,43	11,0
5201801033	1"	0,61	15,5	1,48	37,5	0,39	10,0
5201801042	1.1/4"	0,69	17,5	1,85	47,0	0,41	10,5
5201801048	1.1/2"	0,65	16,5	2,13	54,0	0,41	10,5
5201801051	2"	0,67	17,0	1,18	30,0	0,43	11,0

**BSP FEMALE PLUG**

Available also for other thread type

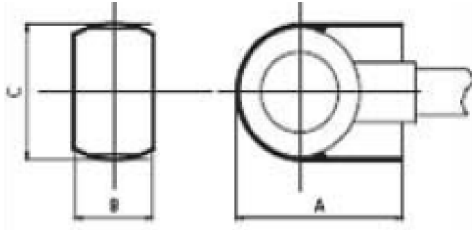

**TAPPO FEMMINA BSP**

Sono disponibili per altri tipi di filetto

part nr. codice	size dimensione	A		B	
		[in]	[mm]	[in]	[mm]
<i>To protect Male Thread / Protezione Filetto Maschio</i>					
5201701017	3/8"	0,43	11,0	0,75	19,0
5201701021	1/2"	0,55	14,0	0,91	23,0
5201701027	3/4"	0,87	22,0	1,16	29,5
5201701033	1"	0,85	21,5	1,44	36,5
5201701042	1.1/4"	0,93	23,5	1,77	45,0
5201701048	1.1/2"	1,12	28,5	1,99	50,5
5201701051	2"	1,08	27,5	2,46	62,5

**PLUG FOR BANJO**

Available also for other thread type



**TAPPO A CAPPuccio**

Sono disponibili per altri tipi di filetto

part nr. codice	size dimensione	A		B		C	
		[in]	[mm]	[in]	[mm]	[in]	[mm]
5202102013	1/4"	0,67	17,0	0,32	8,0	0,65	16,5
5202102017	3/8"	0,79	20,0	0,39	10,0	0,77	19,5
5202102021	1/2"	1,12	28,5	0,57	14,5	1,02	26,0
5202102027	3/4"	1,28	32,5	0,65	16,5	1,18	30,0
5202102033	1"	1,73	44,0	1,00	25,5	1,64	41,5